



Title:

Threats to Semporna's Reefs: A Comparative Study of Underwater Survey Results versus Community Perception

Speaker:

Choo Poh Leem*, Rojaniah Jawalani, Cheo Seng
Kong & Herminatalia Tabar

Date:

18 & 19 November 2019



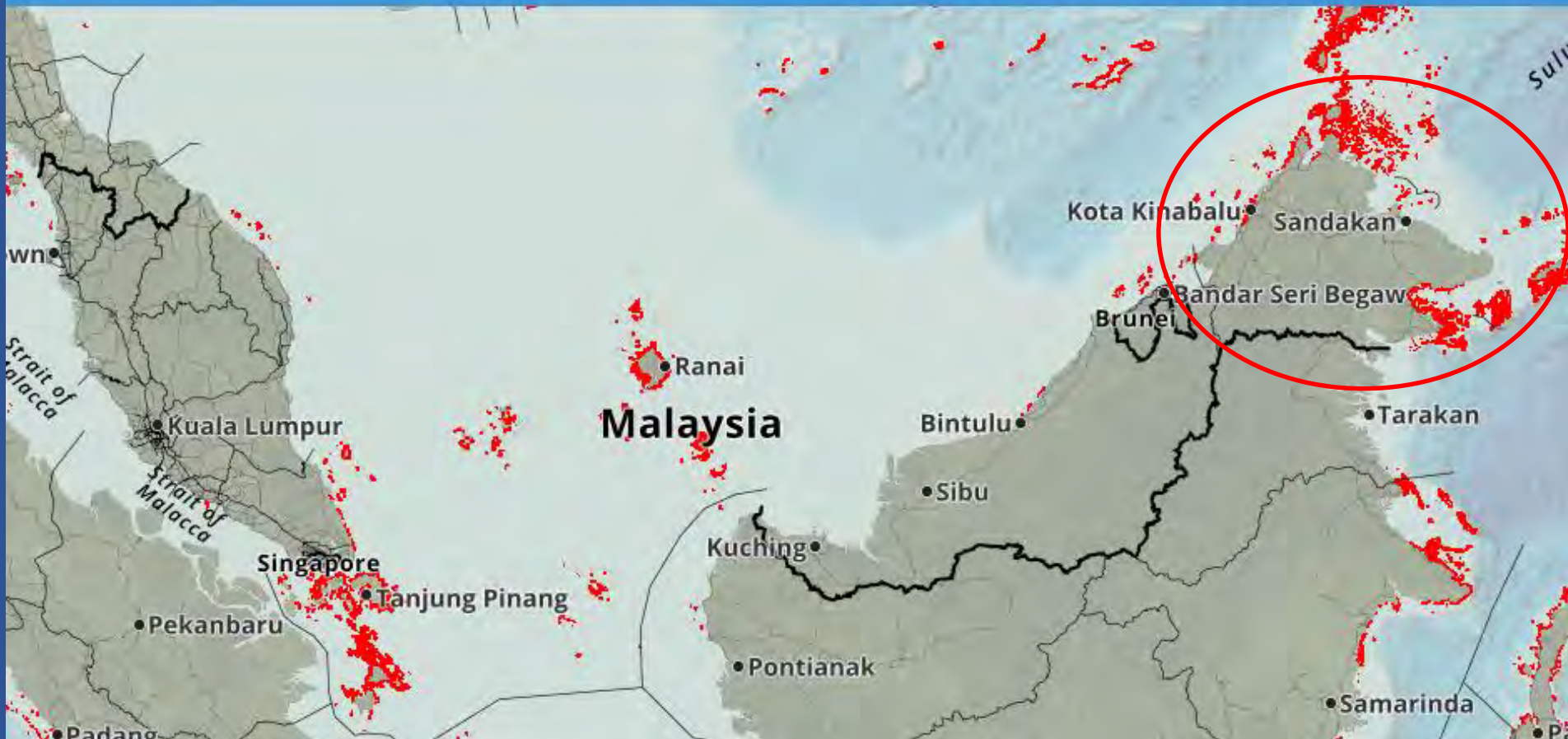
UTM
UNIVERSITI TEKNOLOGI MALAYSIA





Distribution of Coral reefs in Malaysia

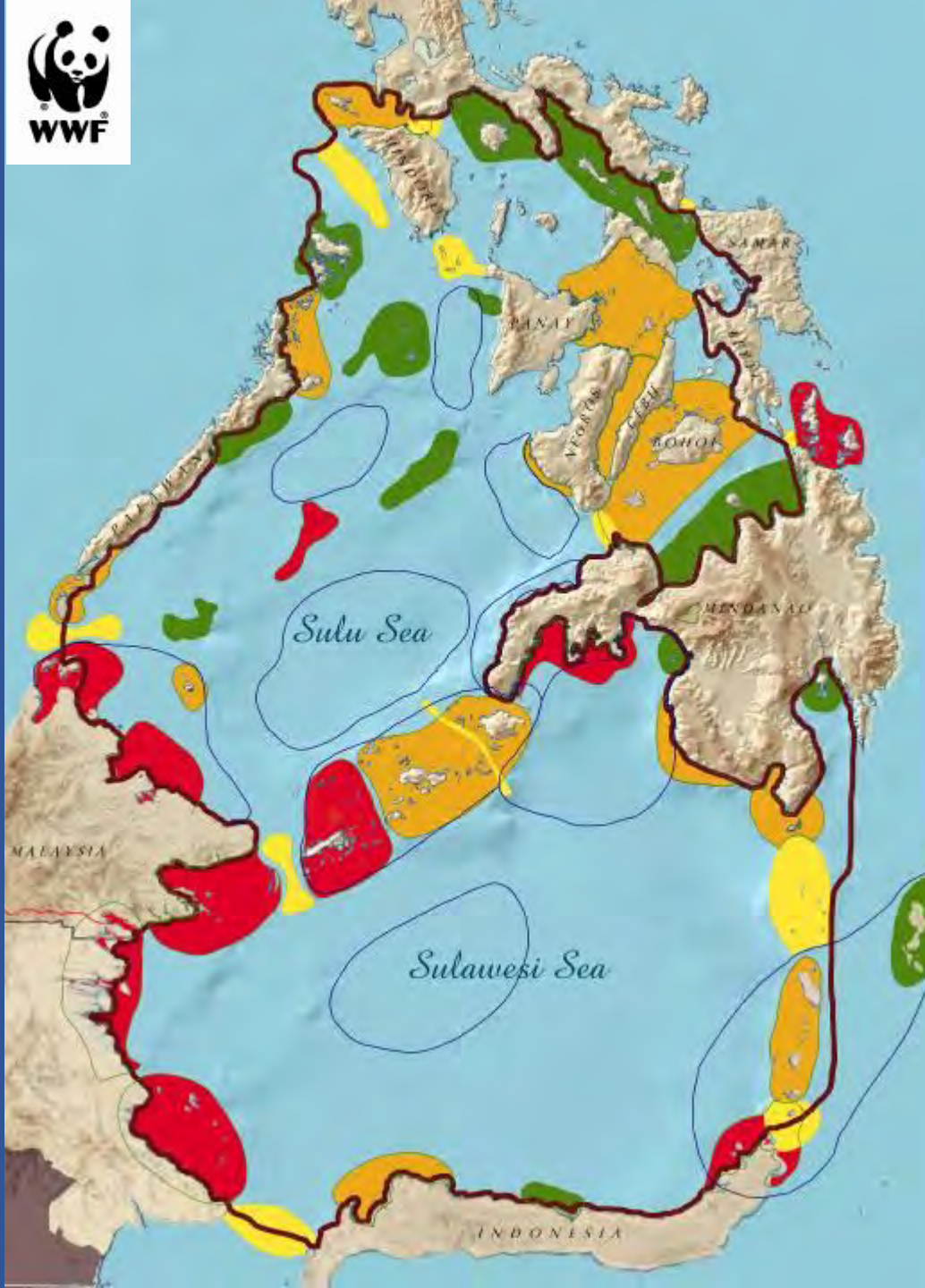
OCEAN DATA VIEWER





THE CORAL TRIANGLE: THE WORLD'S CENTRE OF MARINE BIODIVERSITY





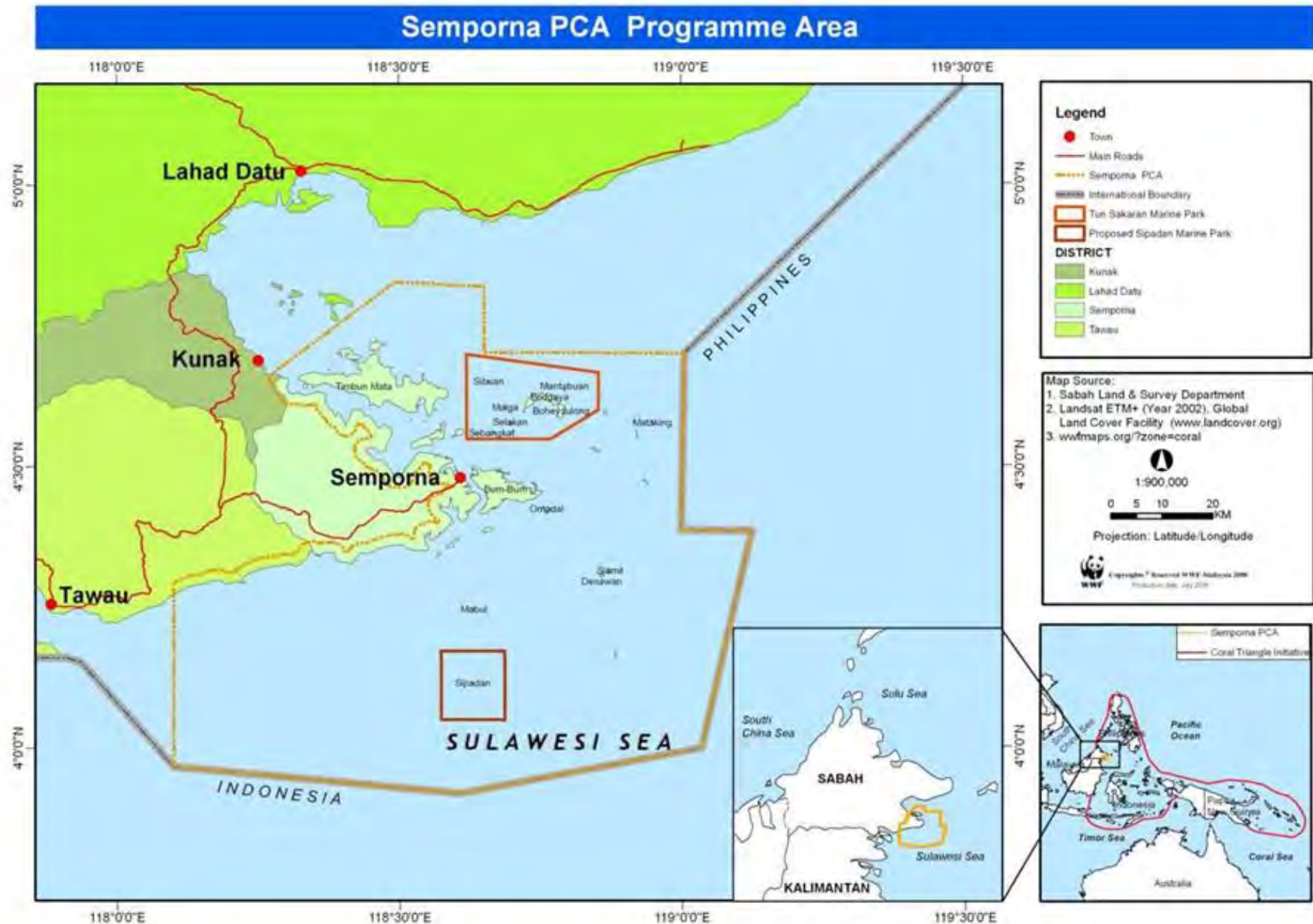
Sulu-Sulawesi Marine Ecoregion (SSME)

3 Globally important
Priority Conservation
Areas (PCAs) in the
Malaysian SSME

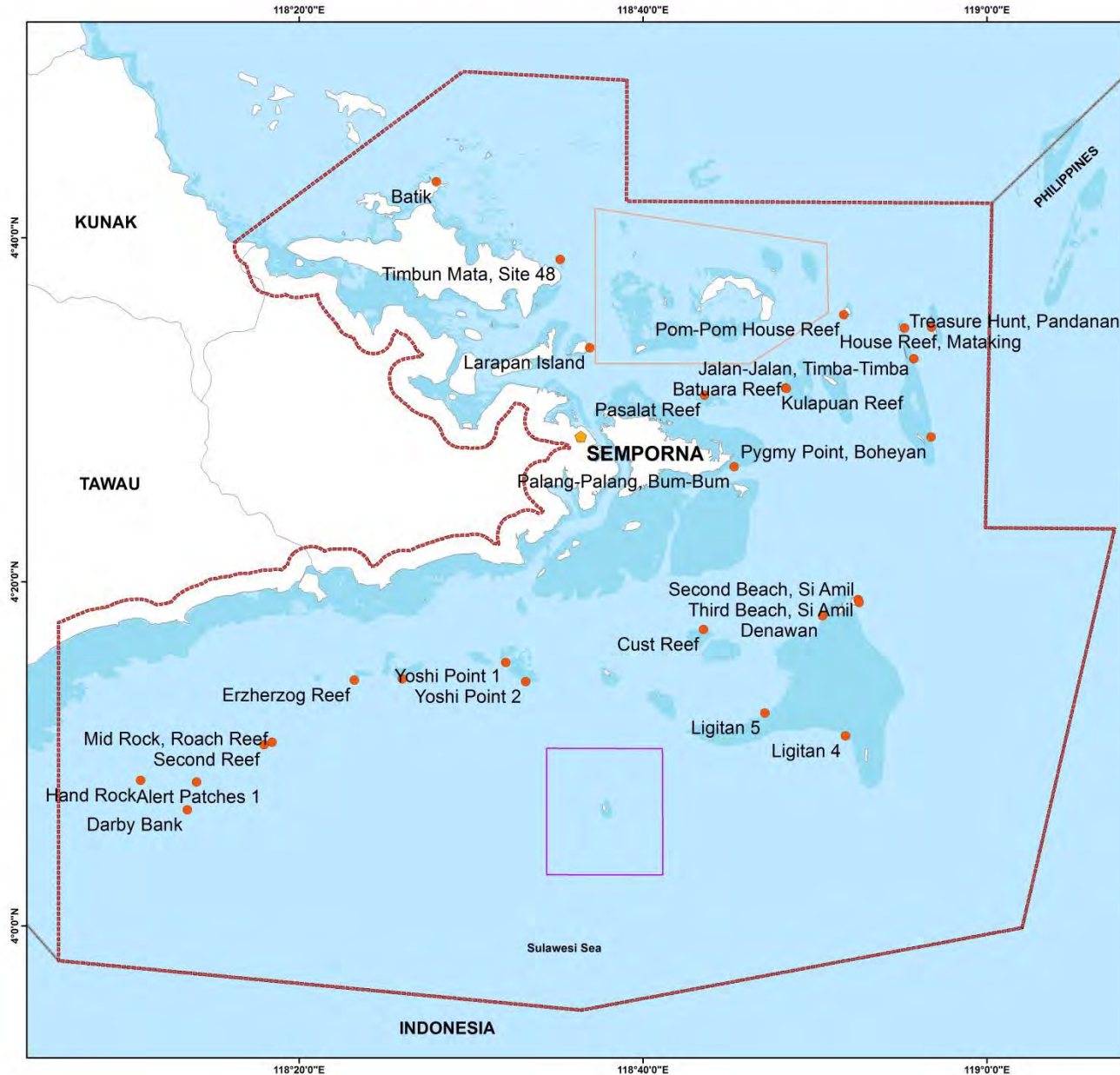
- Kudat-Banggi PCA
- Sandakan PCA
- Semporna PCA



Semporna Priority Conservation Area



REEF CHECK SURVEY SITES 2017

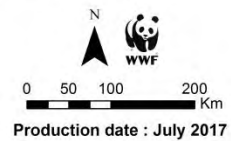


Legend

- Town
- Semporna PCA
- International Boundary
- Sipadan Marine Park
- Tun Sakaran Marine Park
- Coral Reefs

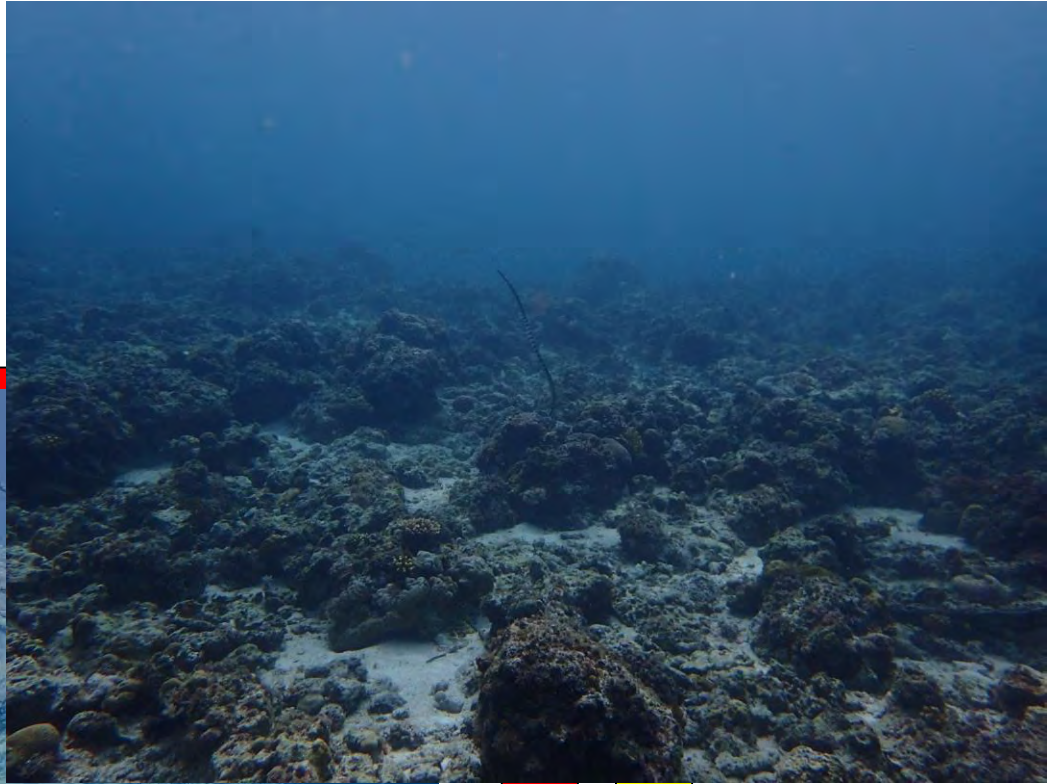
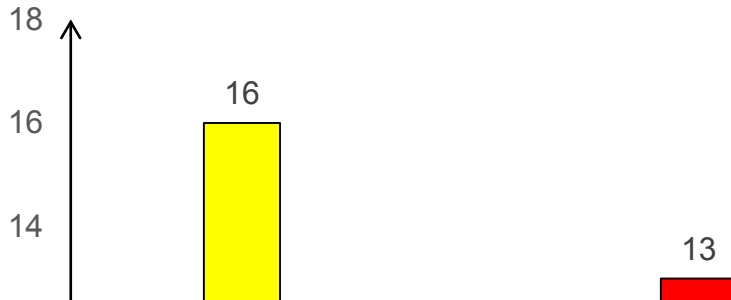
Map Source:

1. Sabah Parks
2. Ho & Kassem, (2009), Reef Status of Semporna Priority Conservation Area
3. Coral reefs was updated with Landsat satellite image, (2016)





Reef Condition after 8 years ...

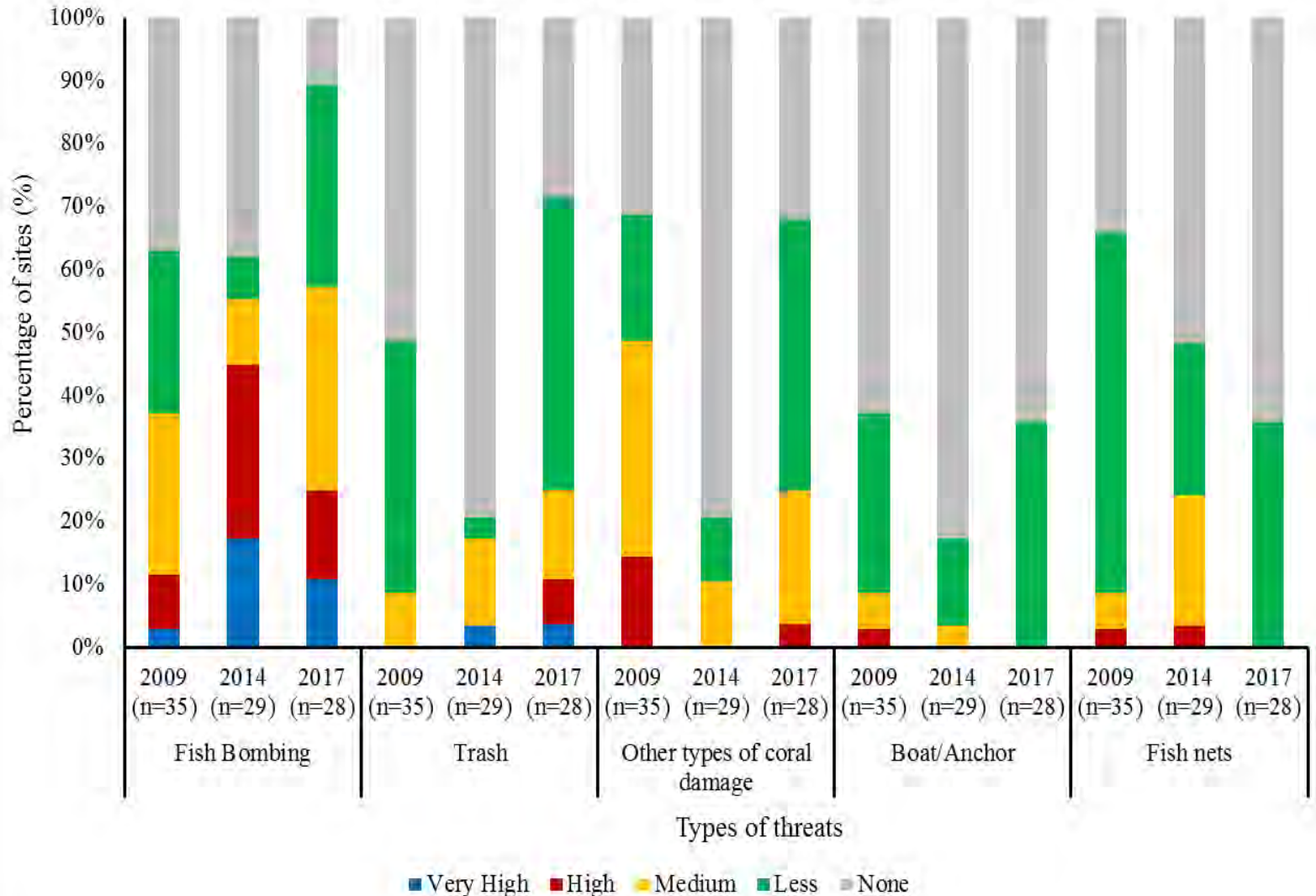


eyed in 2009 (n=34), 2014 (n=29)



Visible Human Impact Underwater

Graph of Human Impact Index at Semporna PCA





Fish Bombing continues...



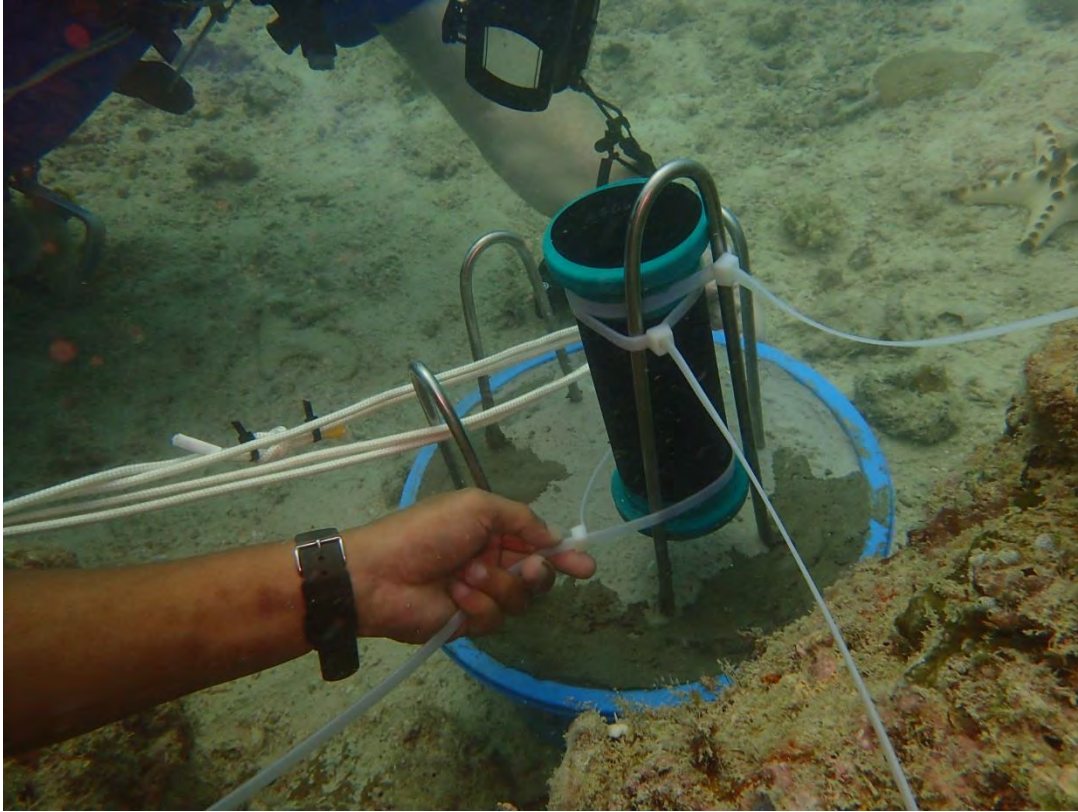
© WWF-Malaysia / Eric Mudge



© WWF-Malaysia / Eric Mudge



Blast Detector Deployment

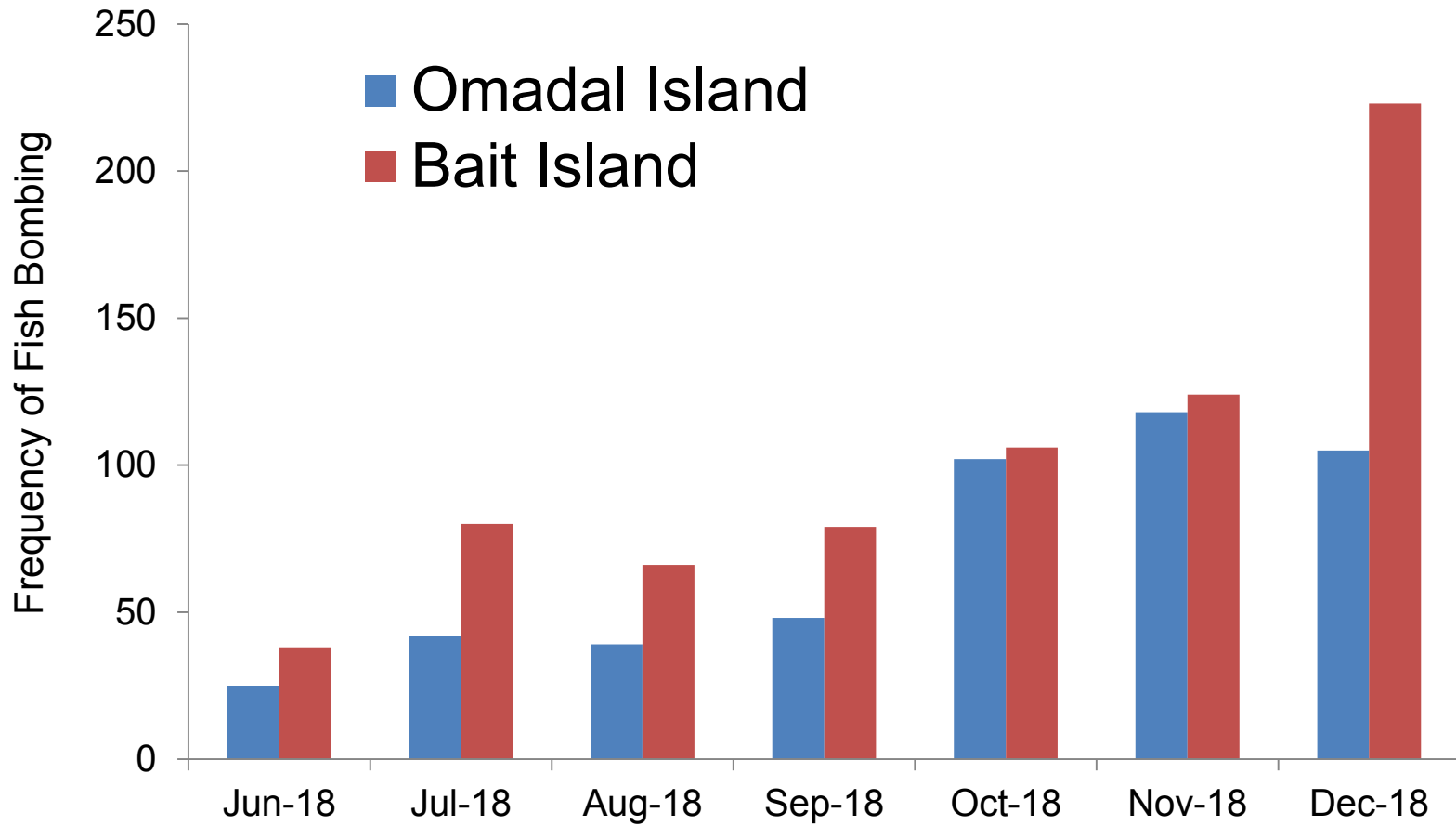


- Loggers were deployed in Omodal Island (13th June 2018) and Bait Island (14th June 2018) because the island community reported fish bombing occurrence there.



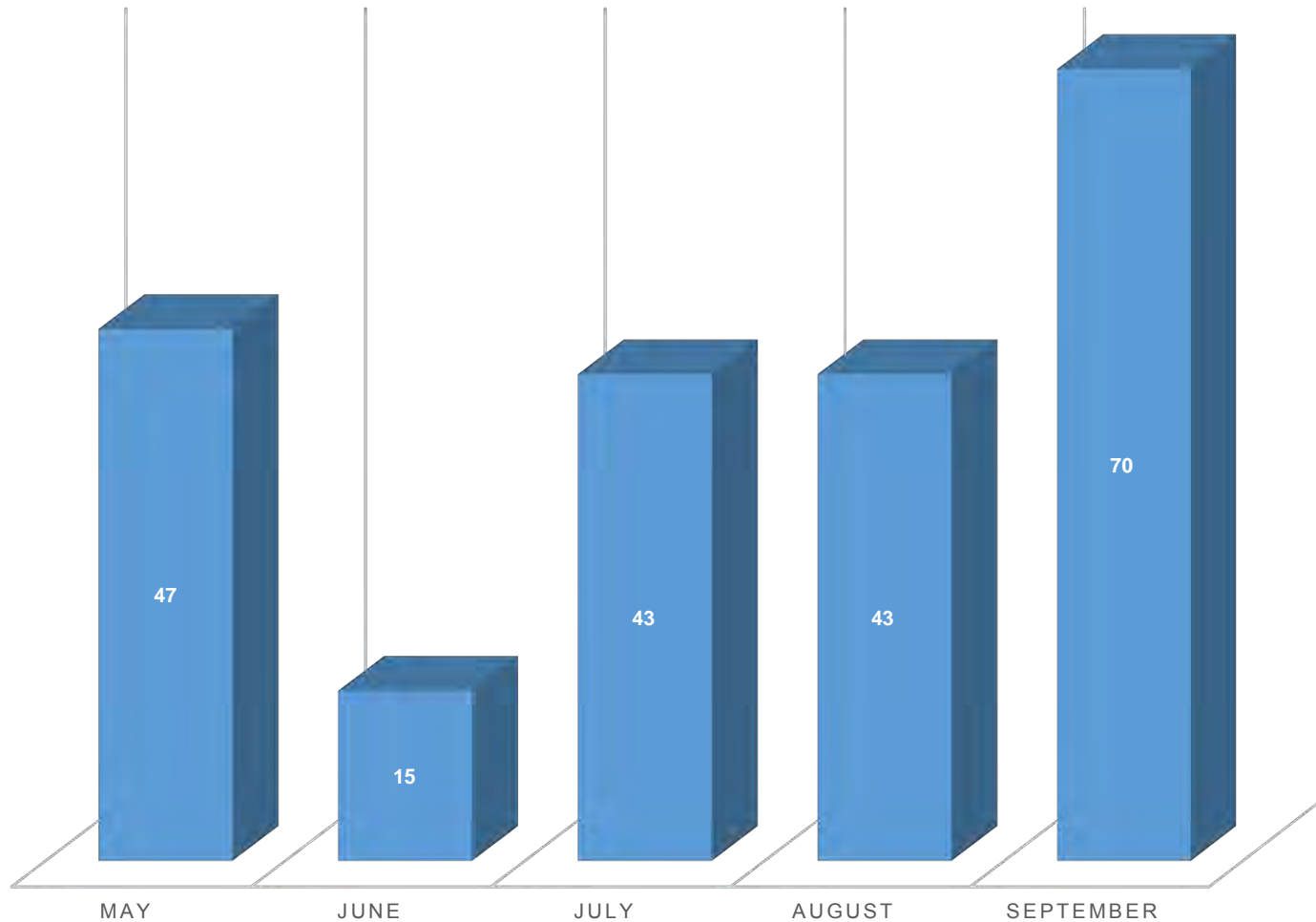


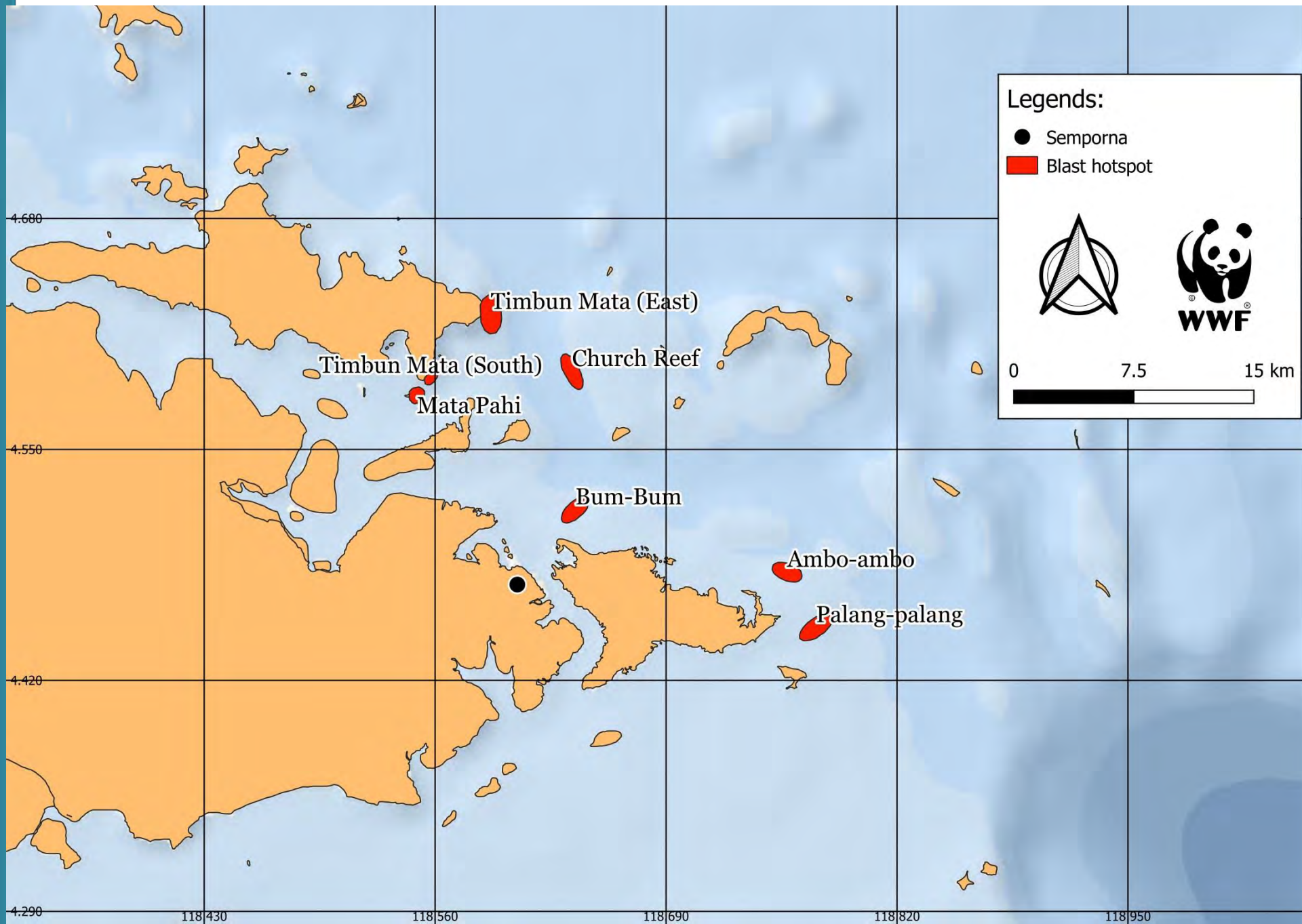
Number of Fish Bombing Recorded





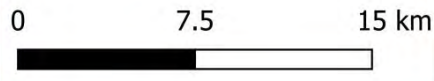
Fish Bombing Recorded by Omadal Community from May-Sept 18





Legends:

- Semporna
- Blast hotspot



BI-1 BI-2 BI-3 OI-1 OI-2 OI-3



Communities' Perception





Together Possible



• www.wwf.org.my



Education and Awareness





Green Semporna



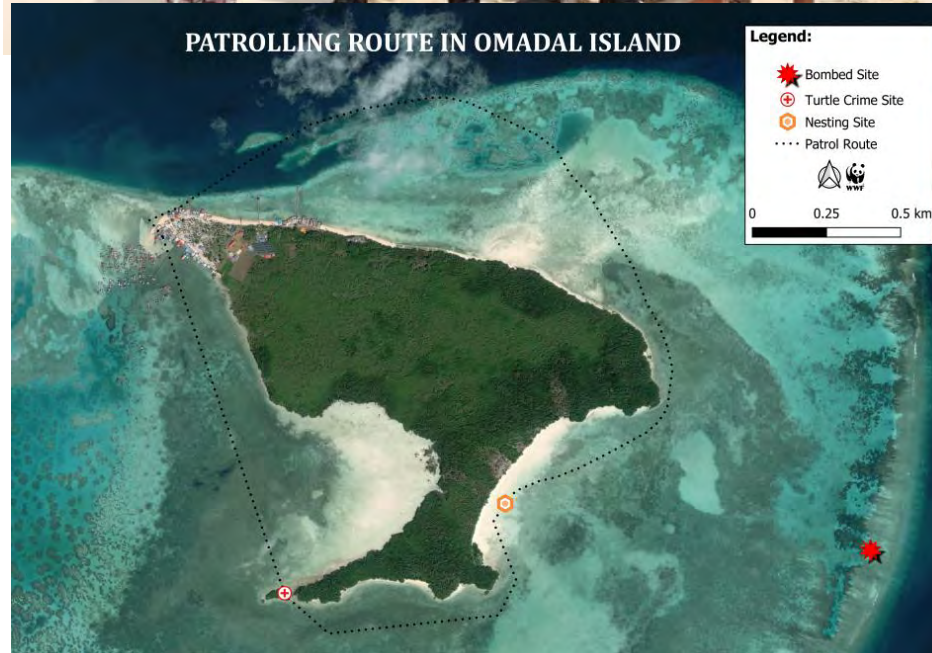


Participatory Community Mapping





Locally Managed Marine Area





Alternative livelihood





Wanita Pulau Omadal (WAPOO)





Consultations in Marine Spatial Planning





2015



SMSP Launch with TRPD & DO

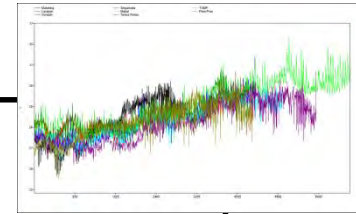


Engagement with multi-stakeholders includes ESSCOM

Roadmap Semporna Marine Spatial Planning



Public Consultation for MSP

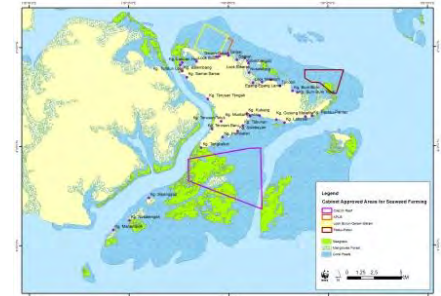


Climate Change Sea water temperature monitoring and sea grass truthing in Semporna

2016



Royal Town Planning Award to SMSP



Strengthening the enforcement and resource management through MSP



2017



Latest Achievement

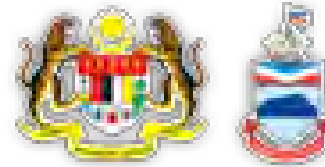




SMSP Partners and Stakeholders



JABATAN PERANCANG
BANDAR DAN WILAYAH
NEGERI SABAH



KePKAS



Sabah Museum



Department of
Wildlife



Environment Protection
Department



JABATAN
PERIKANAN
SABAH



Sabah Tourism Board



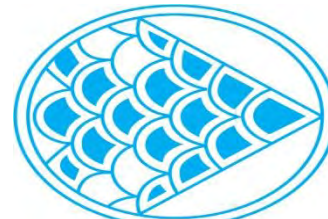
Sabah Parks



Sabah State
Culture Board



MINISTRY OF
EDUCATION
MALAYSIA



LKIM





Thank you !





Q & A session

